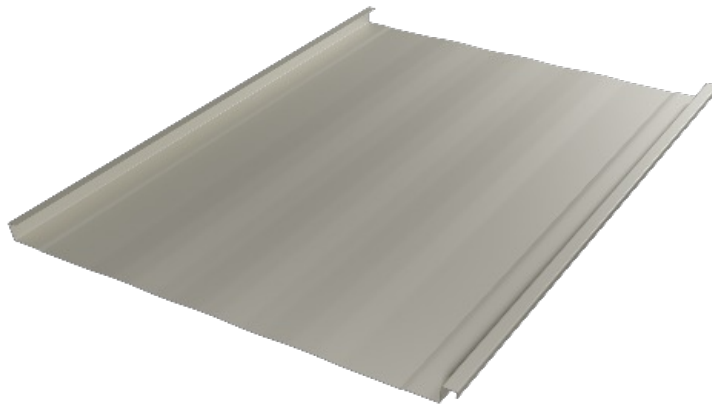


Mechanical Seam 100

Provides superior durability in demanding environments.



The Mechanical Seam 100 panel system delivers dependable weather resistance and a clean architectural appearance for residential, commercial, and agricultural applications. Floating clips allows for unlimited expansion and contraction.

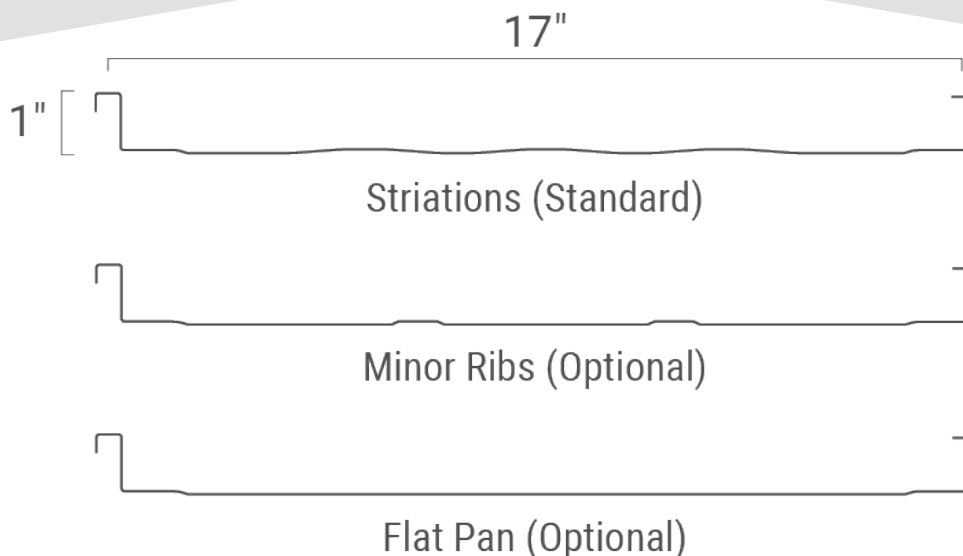


Design & Size



We provide Mechanical Seam 100 custom cut to the inch per specifications. Any length is available from 3' up to 40'. Floating clips allow for unlimited expansion.

Mechanical Seam 100's design features 1" high ribs, spaced 17" on center. Thickness options include 26 and 24 gauge as standard.



Warranty & Finish



Painted Mechanical Seam 100 carries a 50 year paint warranty and 30 year fade/chalk warranty. Unpainted Galvalume carries a 45 year warranty.

The painted option is a baked on enamel paint over primer and Galvalume. The non-painted Galvalume option is 45% zinc and 55% aluminum with a clear acrylic overcoat.



Purpose & Use

Mechanical Seam 100 is a standing seam chosen for its superior weather resistance and long term performance for high end residential and commercial projects.

Mechanical Seam 100 is designed for installation over solid decking and for use on slopes as low as 2.5:12. A floating design allows for longer panels and end-lapping as needed.



MINIMUM SLOPE
2.5:12



SUBSTRATE
Solid Deck



FLORIDA APPROVALS
Florida Building Code
(HVHZ if 24ga, Non-HVHZ if 26ga)



INTENT
Residential
Commercial



CATEGORY
Standing Seam
Mechanical Seam