



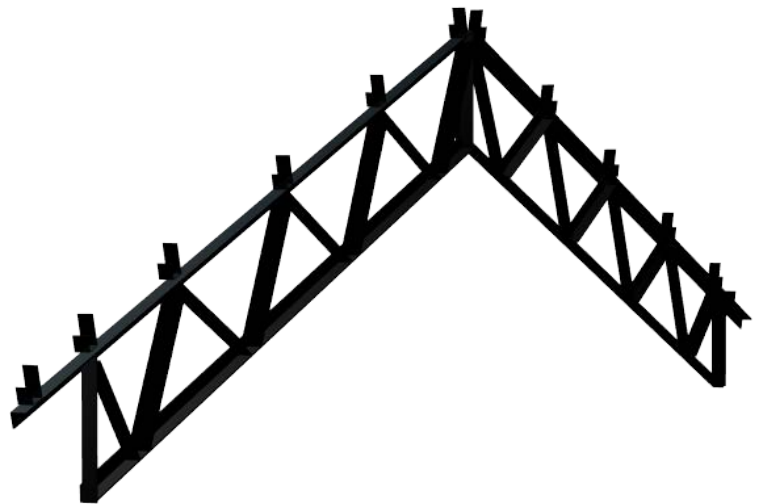
Stronger. Easier Install. Longer Life.

Steel Trusses

Steel Trusses offer increased strength, faster installation, and a longer life compared to wood frame pole barn trusses.

Pre-welded purlin cups, predrilled bolt holes, and included mounting hardware for fast & easy installation.

Gable, lean-to, and header trusses are all available; with accessories and lumber to round out any project.



Steel Trusses

Engineering

Our standard steel trusses are engineered from 2"x2"x3/16" angle iron and 1"x1"x1/8" webbing and are intended for agricultural use. These trusses meet Florida and Alabama requirements of 140-mph wind load and 20 mph snow load when set on 6"x6" posts at 10-foot centers.

We also offer tubing steel trusses by special order.

Styles

Truss styles include gable, lean-to, and header trusses.

Gable trusses are standard at 4:12 slope, though virtually any slope is available by special order.

Designed to compliment gable trusses, our Lean-To trusses are standard at 1:12 slope, and available in other slopes as well.

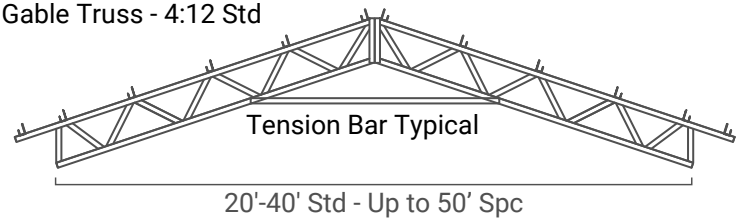
Header trusses allow you to space posts further while still allowing trusses - allowing wider bays and less wood.

Quick Ship

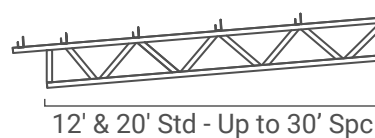
Stock truss sizes in Cleveland Tennessee include gables from 20' to 40' wide and lean-to styles in 12' and 20' wide. We can quickly transfer to any of our locations for pickup or delivery. We also provide the lumber, panels, and accessories for a complete package.



Gable Truss - 4:12 Std



Lean-To Truss - 1:12 Std



Header Truss



Truss Sizes & Options

Gable Truss:

- Stock: 4:12 Slope, Widths: 20', 24', 30', 40'
- Spc: 1:12 & Higher, Widths up to 50 or 60'

Lean-To Truss:

- Stock: 1:12 Slope, Widths: 12', 20'
- Spc: 1:12 & Greater, Widths up to 30'

Header Truss:

- Spc: Widths up to 30' (12', 24' common)

Optional Hardware



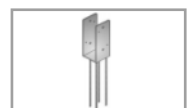
5/8" x 5" Anchor Bolt



5/8" x 6" Drill Bit



Sturdi-Wall Drill-Set Anchor Bracket



Sturdi-Wall Plus Wet-Set Anchor Bracket